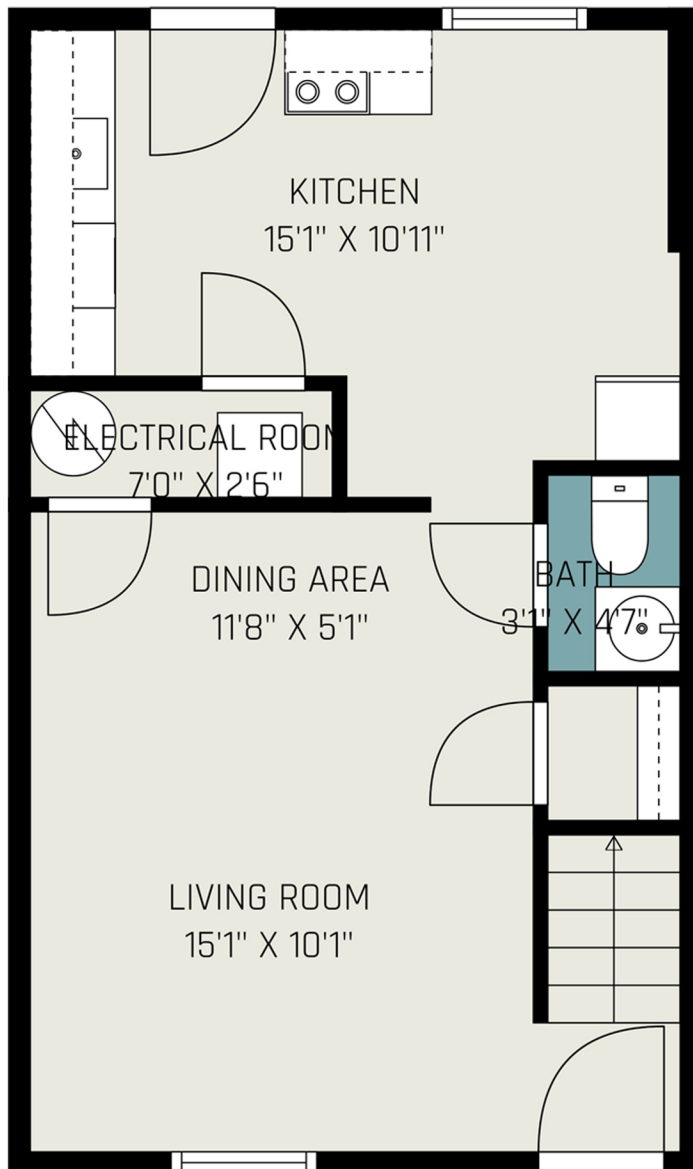


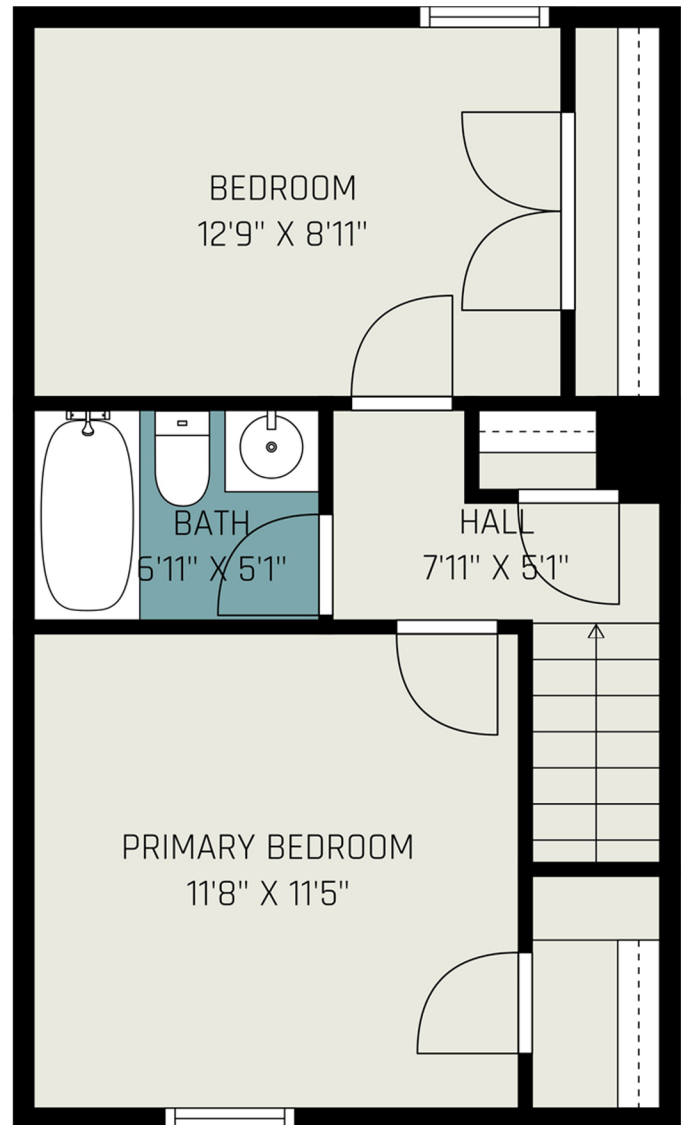
2816 ROSS ROAD

Gross Living Area - 1718 Sq Ft

FIRST FLOOR



SECOND FLOOR



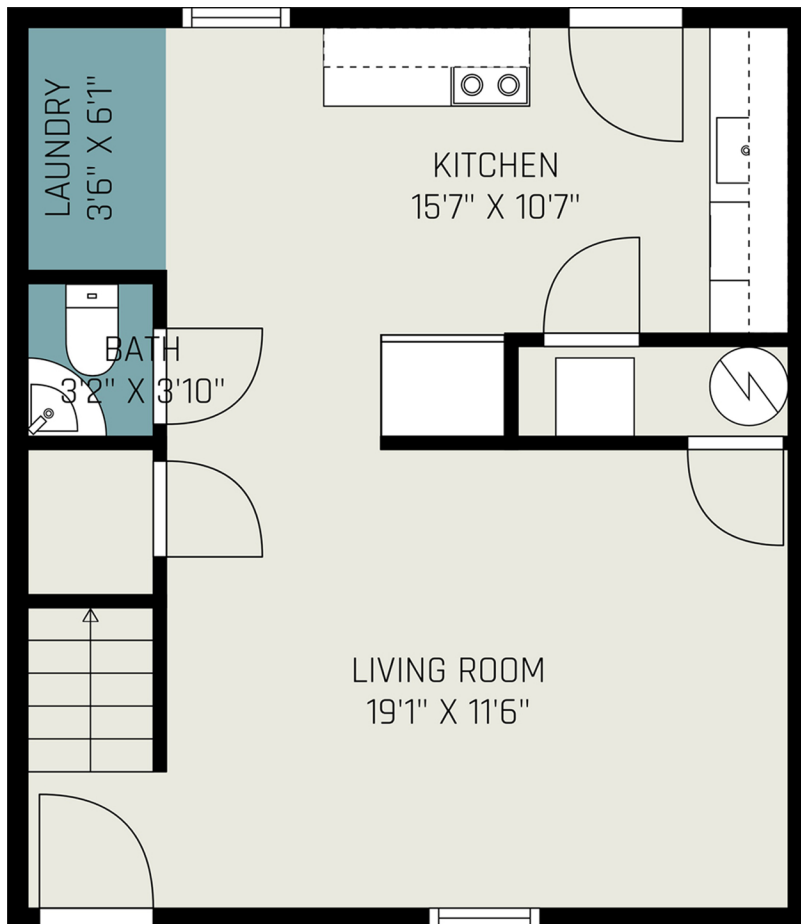
Area Calculation Summary

Gross Living Area	Calculation Details
First Floor	396 Sq Ft
First Floor	424 Sq Ft
Second Floor	396 Sq Ft
Second Floor	502 Sq Ft
Total Living Area	1718 Sq Ft

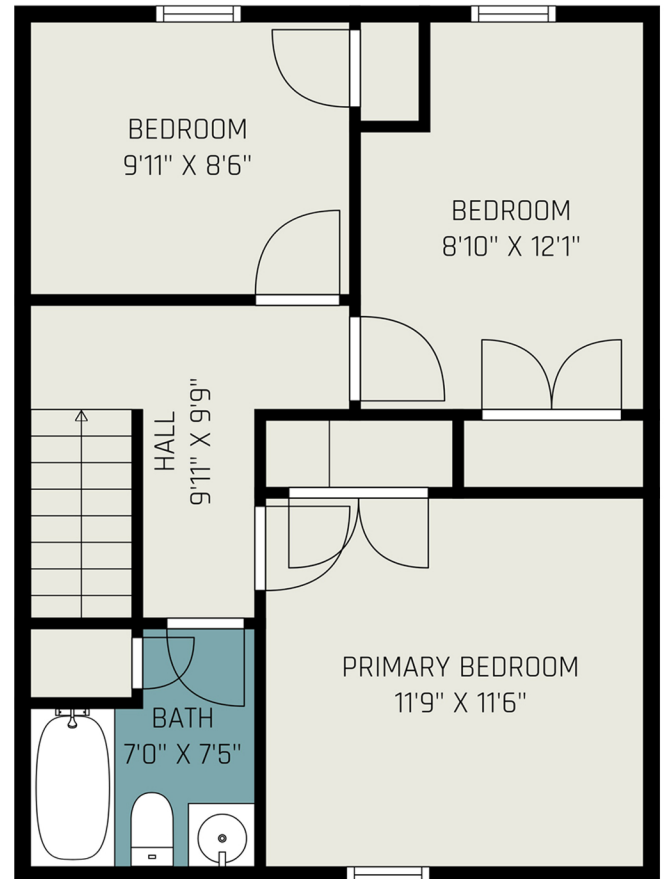
2816 ROSS ROAD

Gross Living Area - 1718 Sq Ft

FIRST FLOOR



SECOND FLOOR



Area Calculation Summary

Gross Living Area	Calculation Details
First Floor	396 Sq Ft
First Floor	424 Sq Ft
Second Floor	396 Sq Ft
Second Floor	502 Sq Ft
Total Living Area	1718 Sq Ft